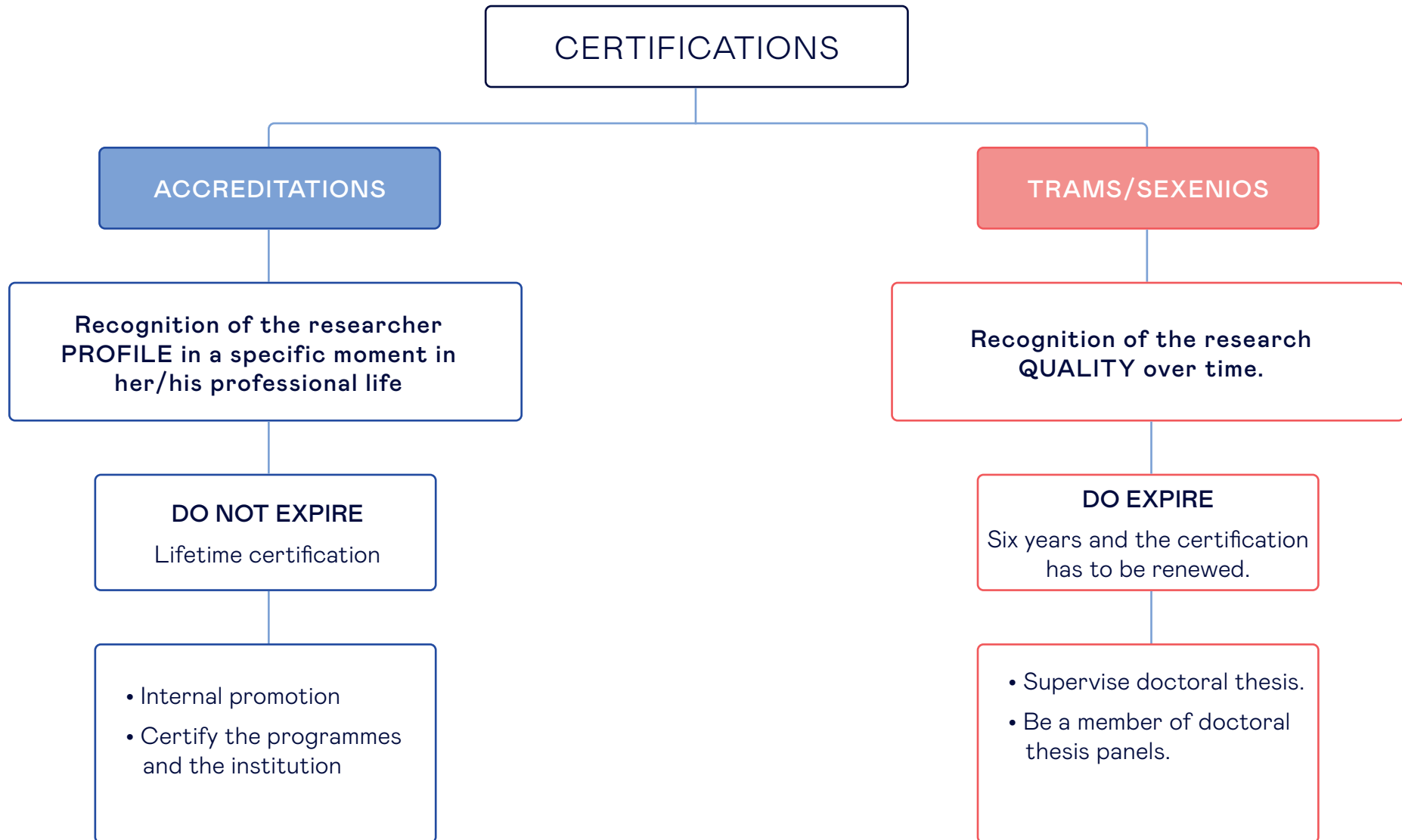


Research Accreditations



Accreditations

Evaluation in a specific moment in a researcher career.
Lifetime certification with no expiration.

Academic Development Track

RESEARCH PROFILE

Professor (Esade) / Full Professor (URL)

AQU Recerca Avançada o
ANECA Catedrático



Associate Prof. (Esade) / Associate Prof. (URL)

5/2/2 AQU Recerca ó
ANECA PUP-PCD-Prof. Titular



Assistant Prof.(Esade) / Contracted Doctoral Prof. (URL)

Competitive open process

PROFESSIONAL / TEACHING PROFILE

Professor (Esade) / Lecturer (URL) - Contracted Doctoral Prof. (URL)

AQU Recerca ó
ANECA PUP-PCD



Senior Lecturer (Esade) / Lecturer (URL) - Contracted Doctoral Prof. (URL)

AQU Recerca
ANECA PUP-PCD-Prof. Titular

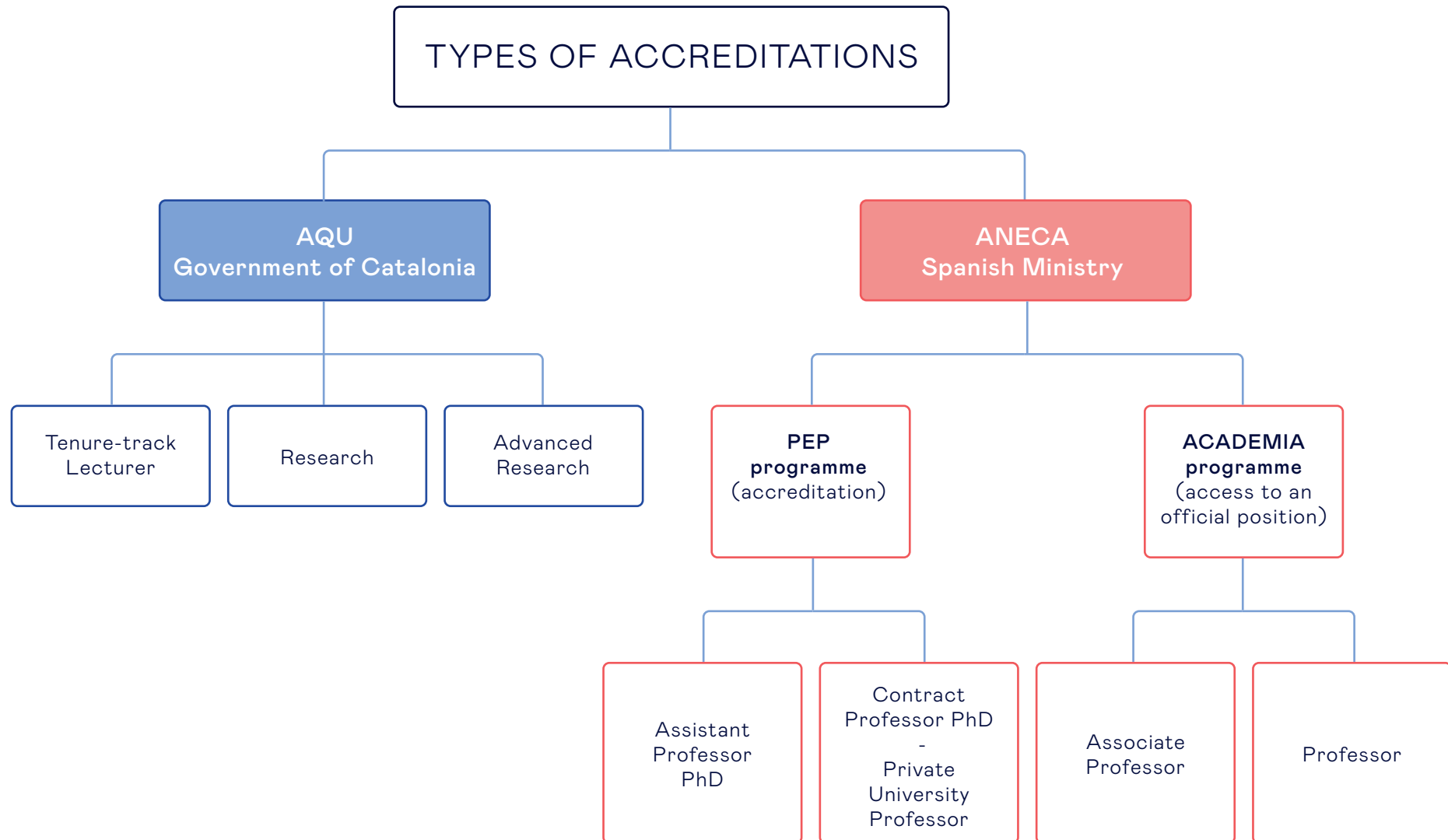


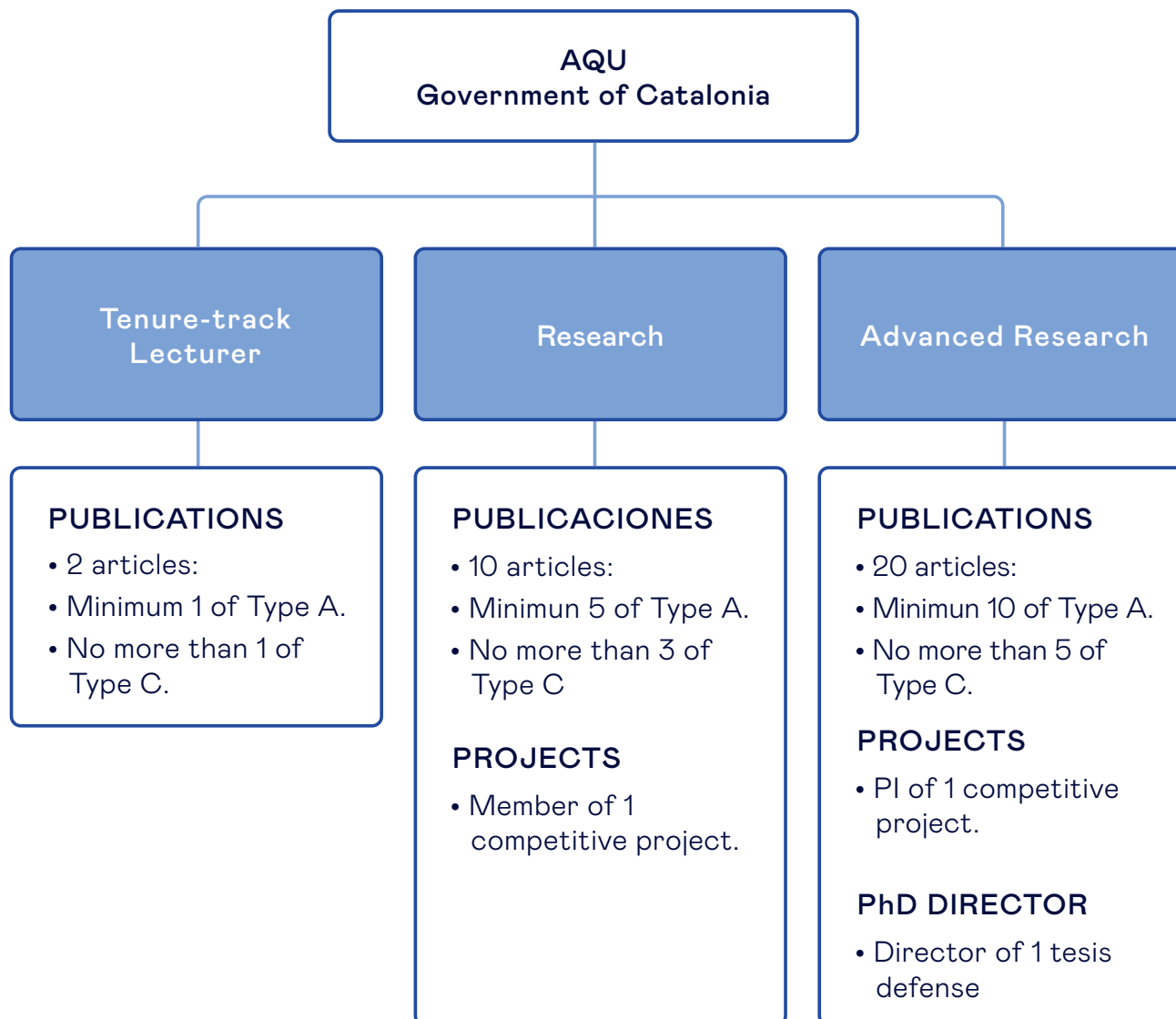
Regulation promotion criteria



Lecturer (Esade) / Lecturer (URL) - Contracted Doctoral Prof. (URL)

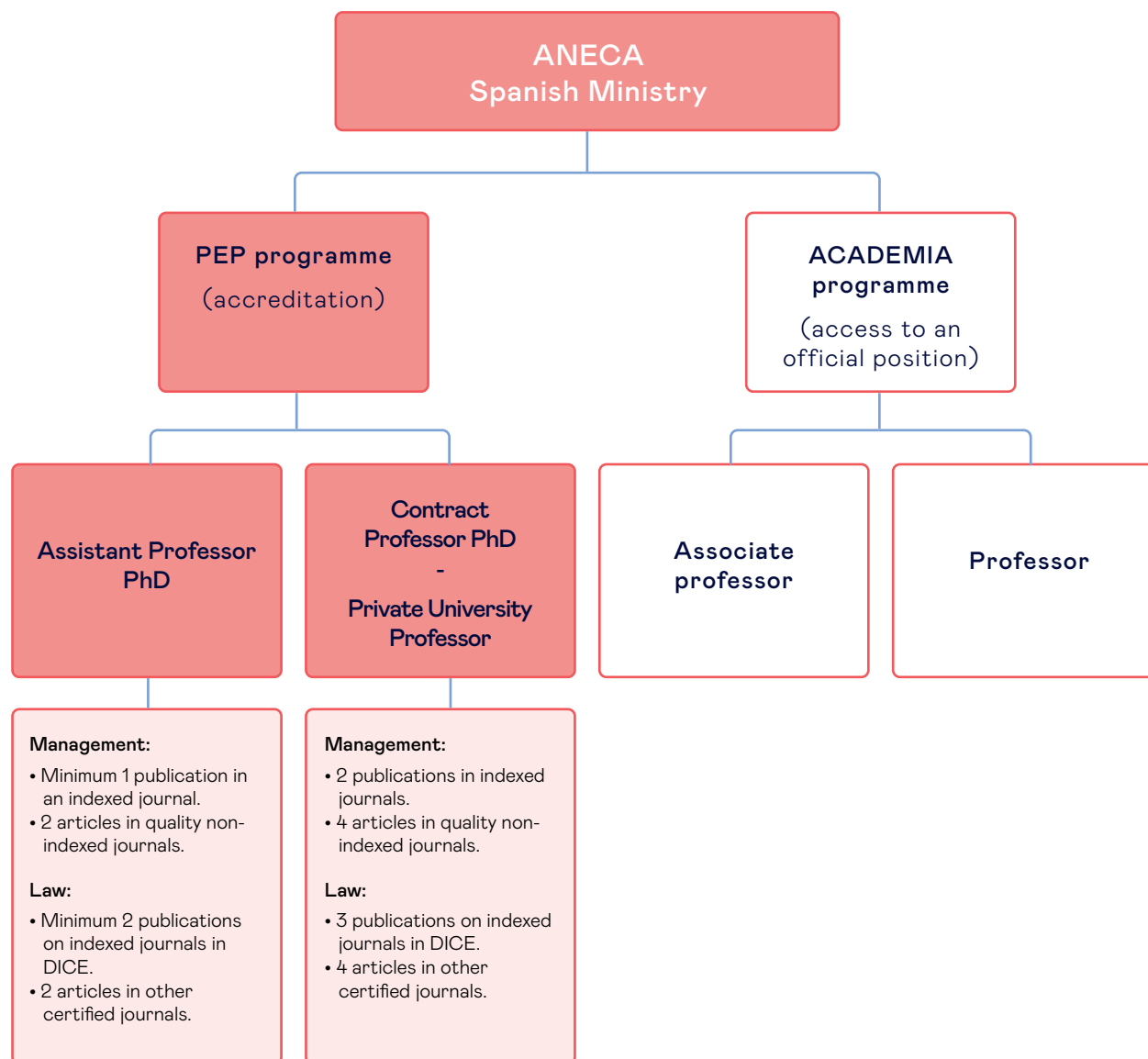
Proceso abierto competitivo / contratación directa





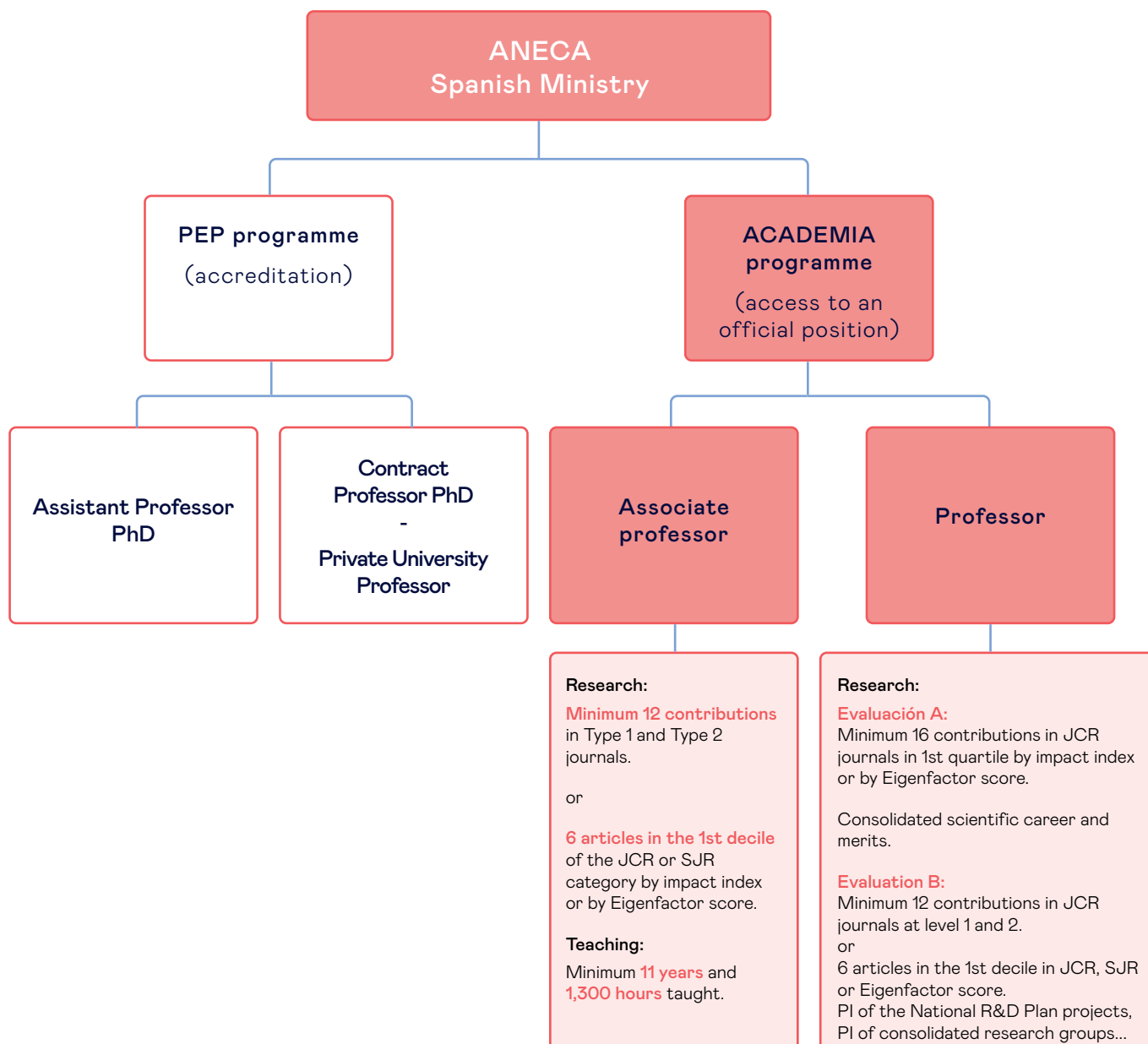
PUBLICATIONS

- Type A:
Management: JCR Q1 or Q2 or Scopus Q1
Law: Carhus+ A
 - Type B:
Management: JCR Q3 or Scopus Q2
Law: Carhus+ B
 - Type C:
Management: JCR Q4 or Scopus Q3
Law: Carhus+ C
-



PUBLICATIONS

- Type 1:
Management: JCR Q1 o Q2 o Scopus Q1
Law: Carhus + A
- Type 2:
Management: JCR Q3 ó Scopus Q2
Law: Derecho: Carhus + B
- Type 3:
Management: JCR Q4 o Scopus Q3
Law: Carhus + C



PUBLICATIONS

- Type 1:
Management: JCR Q1 o Q2 o Scopus Q1
Law: Carhus + A
 - Type 2:
Management: JCR Q3 ó Scopus Q2
Law: Derecho: Carhus + B
 - Type 3:
Management: JCR Q4 o Scopus Q3
Law: Carhus + C
-

Research accreditations: AQU / ANECA equivalences

AQU

TENURE-TRACK
(Lecturer)

RESEARCH

ADVANCED RESEARCH

[Link to AQU](#)

ANECA

PEP

ACADEMIA
(Access to an oficial position)

Assistant Professor
PhD

Contract Professor PhD
-
Private University PhD

Associate Professor

Professor

[Link to ANECA](#)

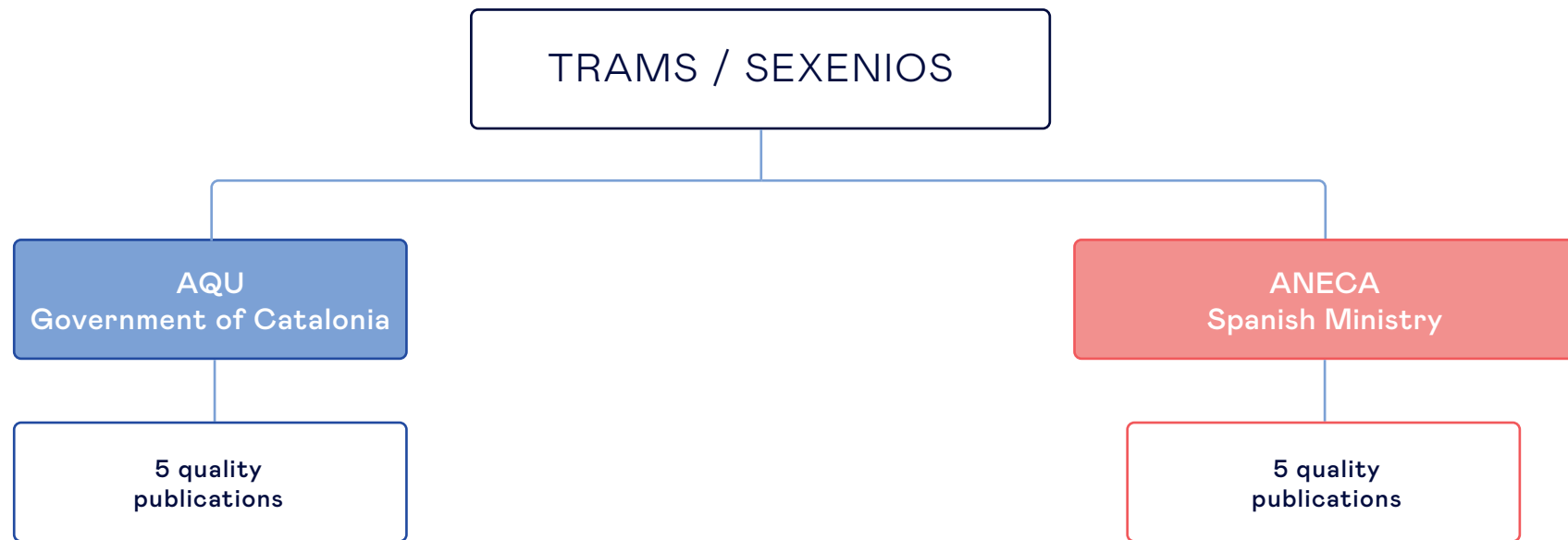
[Link to ANECA](#)

MERITS (Trams / Sexenios)

Certification of a good track record as a researcher over time.

Evaluates the scientific production of the research staff in periods of six years.

After that, the Tram expires and has to be renewed.



Evaluation criteria

PUBLICATIONS

CC. Economic and Business

- **JCR**

- Very high impact (Q1): 8 - 10 points
- High impact (Q2): 7 - 9 points
- Medium impact (Q3): 6 - 8 points
- Low impact (Q4): 3,5 - 6 points

- **SJR / CiteScore**

- High impact (Q1): 7-9 points
- Medium impact (Q2): 6- 8 points

- **Books:**

- Q1 international publishers: up to 6 points
- Q2 international publishers and Q1 national publishers: up to 4 points

- **Books chapters:**

- Q1 international publishers: up to 3 points
 - Q2 international publishers and Q1 national publishers: up to 2 points
-



Evaluation criteria

PUBLICATIONS

Law

- **High relevance**

- Novelty of the topic, methodology and content.
- Special relevance to publications in journals considered of excellence (FECYT).

- **SJR**

- Additional indication to the rest of the general criteria. They are not decisive, just as no indication considered in isolation is.
- In journals, indexing is not enough, but the position that a journal or publication occupies. It is assumed that all or most of the Latindex criteria are met, especially relevant is the peer review.

- **Books and books chapters**

- They have the same category as the articles
- The rule is the exceptionality of the co-author: the number of authors must be justified by the subject, its complexity and extension. It is evaluable that it does not reach the reasonable standards of extension of the “studies”: number of pages.
- In **books**, the length, content, conclusions, and propositions are taken into account, as well as editorial prestige or that they are published in English (with special assessment in the case of books in English published by editorial with prestige -Oxford, Harvard, Springer, etc.).
- **Book chapters**, in addition to their content, are positively valued if they are the result of a research project and when additional relevant impact criteria are revealed.

