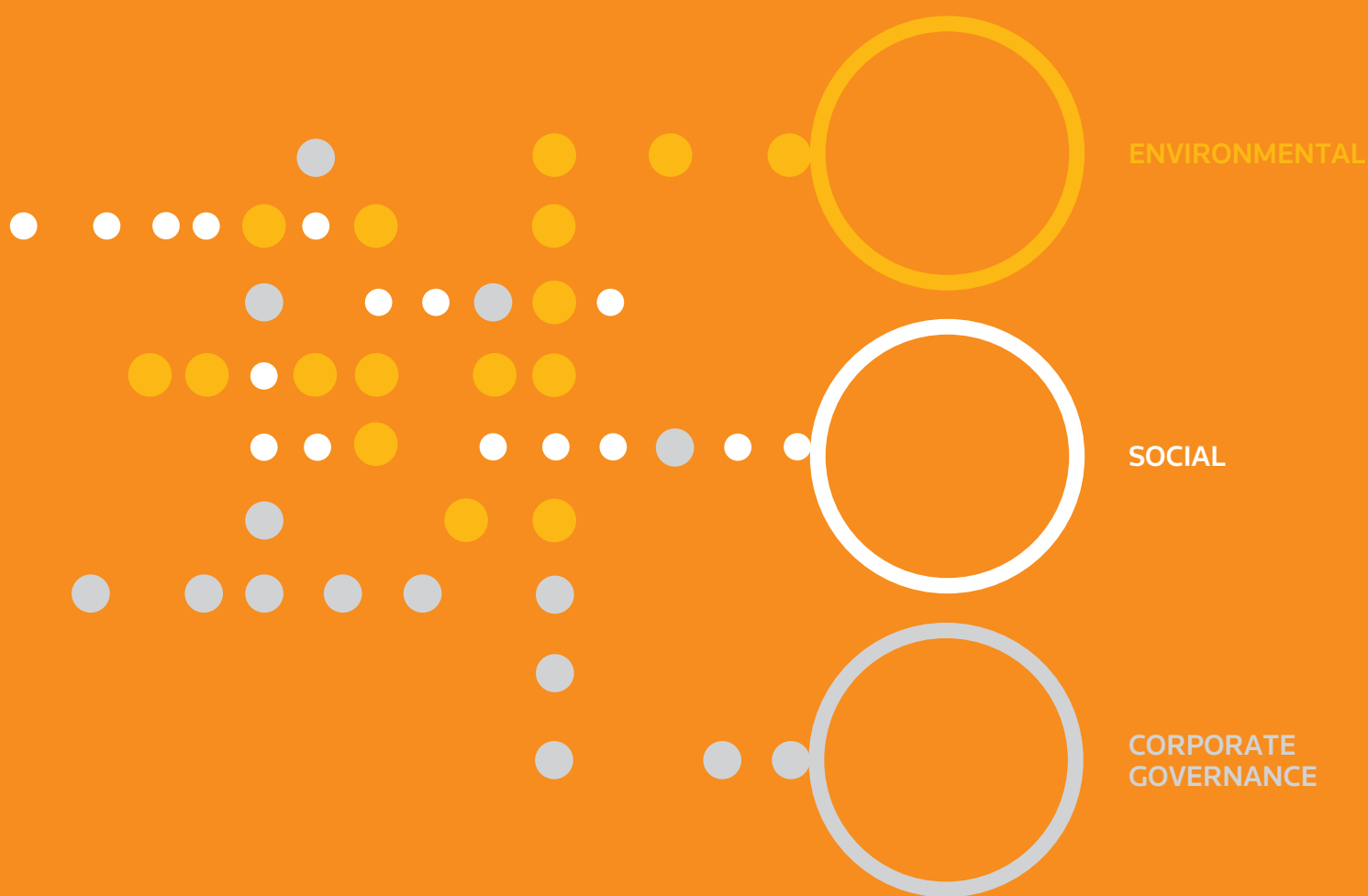


# THOMSON REUTERS ESG DATA



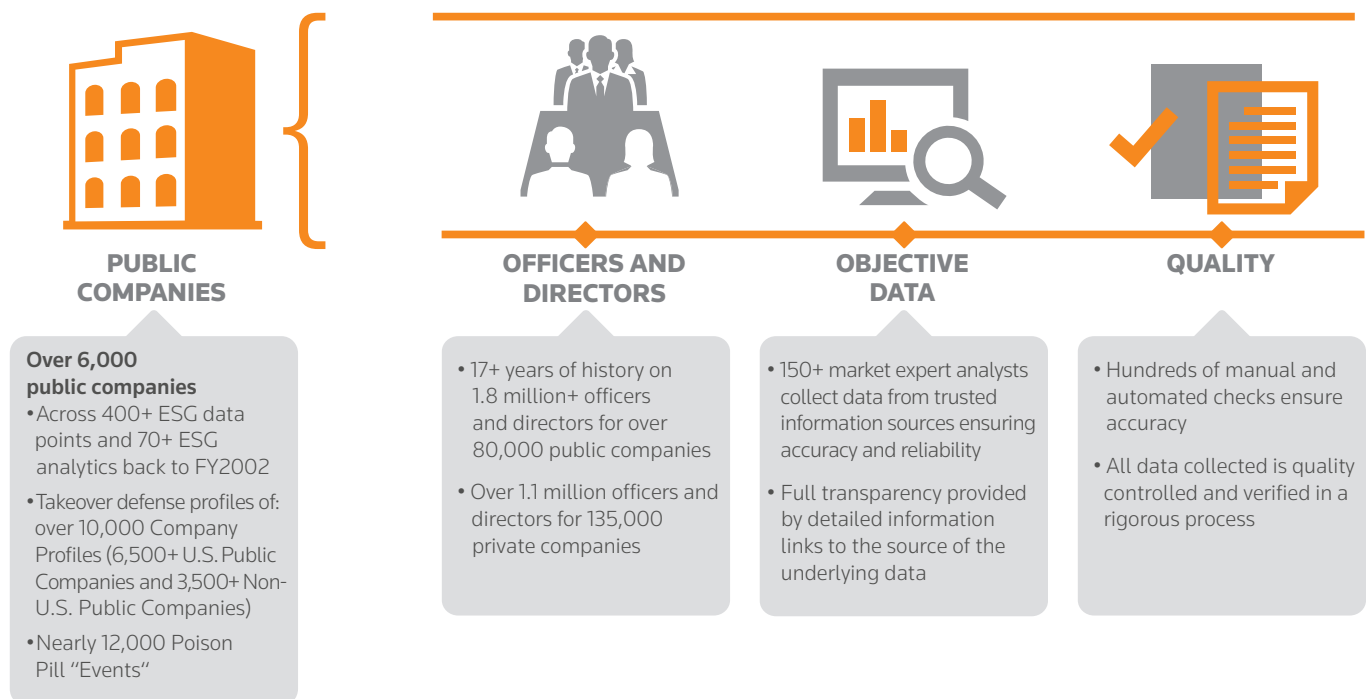
ESG DATA TO ACT ON

# Comprehensive and Timely ESG Data

In today's world of globalization and interdependence and in times of financial crisis, issues such as climate change, biodiversity, human rights, "license to operate," business ethics and corporate governance are at the forefront of public and political attention.

How companies respond to these issues plays a central role in investors' decision-making efforts to identify opportunities and risks for companies. With **Thomson Reuters Eikon™**, you can now easily integrate environmental, social and governance (ESG) factors into portfolio analysis, equity research, screening or quantitative analysis. Thomson Reuters Eikon delivers our comprehensive ESG database, offering users the possibility to combine and analyze ESG data using cutting-edge applications for in-depth analysis.

## IN-DEPTH ESG CONTENT...

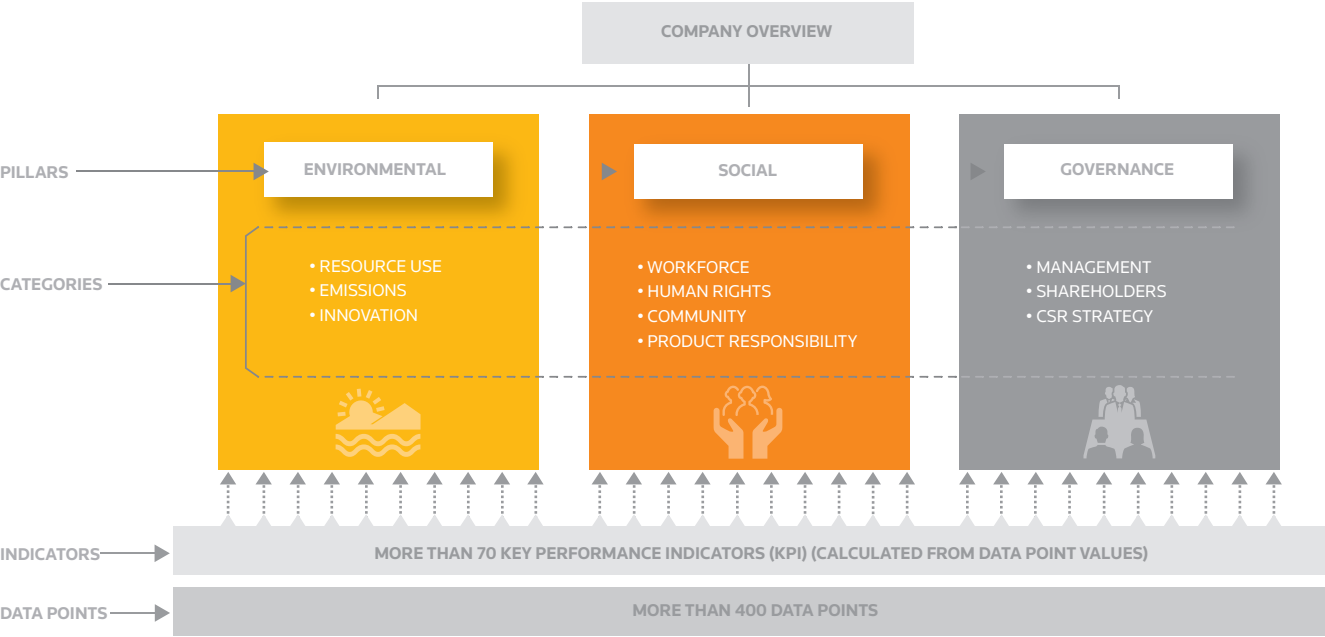


## ...INTEGRATED ON THE INDUSTRY'S MOST INTUITIVE DESKTOP: THOMSON REUTERS EIKON

Thomson Reuters Eikon seamlessly integrates financial, nonfinancial data points and analytics, showing you which companies fit your investment strategy and are most suitable for your portfolio.



# ESG Comprehensive Model and Sample Measures



The list below is a sample of the 400+ ESG metrics available. A full list is available on request.

## ESG METRICS COVERING SUSTAINABILITY REPORTING

ENVIRONMENTAL	SOCIAL	GOVERNANCE
		
<ul style="list-style-type: none"><li>• Biodiversity Impact Reduction</li><li>• Carbon Offsets/Credits</li><li>• CO2 Equivalents Emission Total</li><li>• Eco-Design Products</li><li>• Energy Use Total</li><li>• Environmental Expenditures</li><li>• Environmental Products</li><li>• Environmental R&amp;D Expenditures</li><li>• Environmental Supply Chain Management</li><li>• Estimated CO2 Equivalents Emission Total</li><li>• e-Waste Reduction</li><li>• Green Buildings</li><li>• Hazardous Waste</li><li>• Hybrid Vehicles</li><li>• Non Hazardous Waste</li><li>• Policy Energy Efficiency</li><li>• Policy Water Efficiency</li><li>• Renewable Energy Use</li><li>• Targets Emissions</li><li>• Waste Recycling Ratio</li><li>• Waste Total</li><li>• Water Pollutant Emissions</li><li>• Water Recycled</li><li>• Water Technologies</li><li>• Water Withdrawal Total</li></ul>	<ul style="list-style-type: none"><li>• Accidents Total</li><li>• Average Training Hours</li><li>• Customer Satisfaction</li><li>• Day Care Services</li><li>• Donations Total</li><li>• Employee/Contractor Fatalities</li><li>• Employee Satisfaction</li><li>• Flexible Working Schemes</li><li>• Health &amp; Safety Policy</li><li>• HIV/AIDS Program</li><li>• Human Rights Policy</li><li>• Improvement Tools Business Ethics</li><li>• Lost Time Injury Rate</li><li>• Lost Working Days</li><li>• Management Training</li><li>• Policy Child Labor</li><li>• Policy Diversity and Opportunity</li><li>• Quality Management Systems</li><li>• Supply Chain Health &amp; Safety Training</li><li>• Total Injury Rate</li><li>• Trade Union Representation</li><li>• Training Costs Total</li><li>• Turnover of Employees</li><li>• Women Employees</li><li>• Women Managers</li></ul>	<ul style="list-style-type: none"><li>• Anti-Takeover Devices</li><li>• Audit Committee Independence</li><li>• Board Cultural Diversity</li><li>• Board Meeting Attendance Average</li><li>• Board Member Affiliations</li><li>• Board Member Compensation</li><li>• CEO-Chairman Separation</li><li>• Classified Board Structure</li><li>• Compensation Committee Independence</li><li>• CSR Sustainability Committee</li><li>• CSR Sustainability External Audit</li><li>• CSR Sustainability Report Global Activities</li><li>• Female on Board</li><li>• Global Compact</li><li>• GRI Report Guidelines</li><li>• Highest Remuneration Package</li><li>• Policy Board Diversity</li><li>• Policy Board Experience</li><li>• Policy Board Independence</li><li>• Policy Board Size</li><li>• Policy Equal Voting Right</li><li>• Shareholders Vote on Executive Pay</li><li>• Voting Cap Percentage</li><li>• Staggered Board Structure</li><li>• Veto Power or Golden Share</li></ul>



## ABOUT THOMSON REUTERS

Thomson Reuters is the world's leading source of intelligent information for business and professionals. We combine industry expertise with innovative technology to deliver critical information to lead decision makers in the financial and risk, legal, tax and accounting, intellectual property and science, healthcare and media markets, powered by the world's most trusted news organization. With headquarters in New York and major operations in London and Eagan, Minnesota, Thomson Reuters employs just under 55,000 people and operates in over 100 countries. Thomson Reuters shares are listed on the Toronto and New York Stock Exchanges. For more information, go to [thomsonreuters.com](http://thomsonreuters.com)

**Send us a sales inquiry at:**

[financial.thomsonreuters.com/sales](http://financial.thomsonreuters.com/sales)

**Read more about our products at:**

[financial.thomsonreuters.com](http://financial.thomsonreuters.com)

**Find out how to contact your local office:**

[financial.thomsonreuters.com/locations](http://financial.thomsonreuters.com/locations)

**Access customer service at:**

[financial.thomsonreuters.com/customers](http://financial.thomsonreuters.com/customers)

The intelligence, technology and human expertise  
you need to find trusted answers.



the answer company™  
**THOMSON REUTERS®**